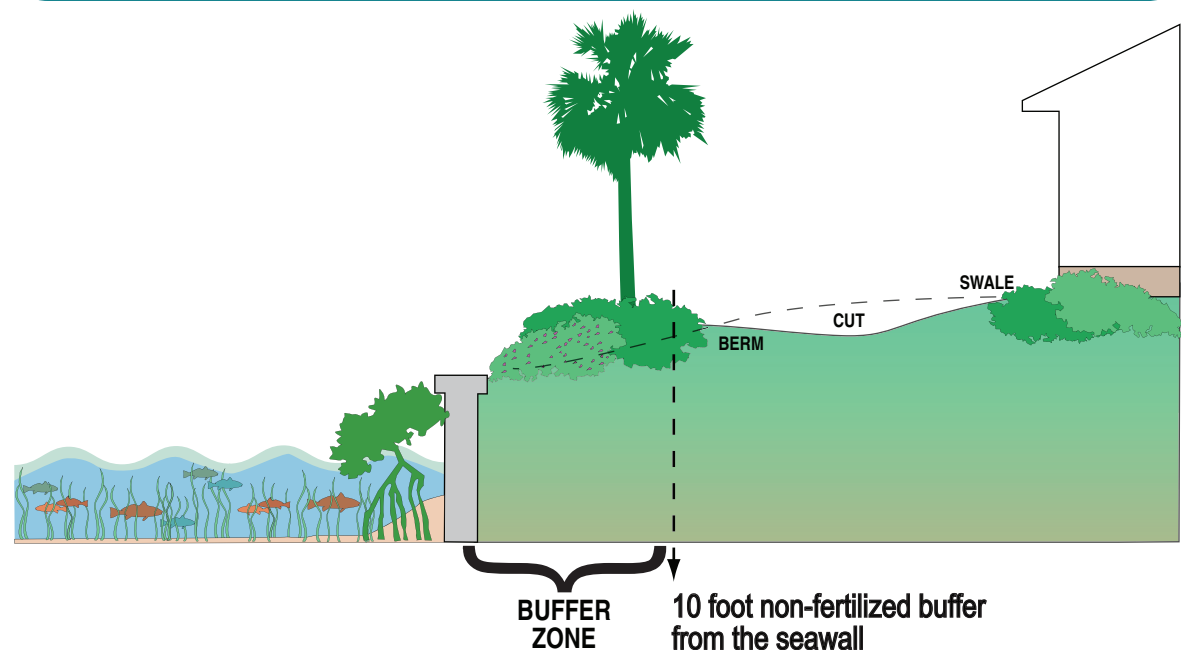
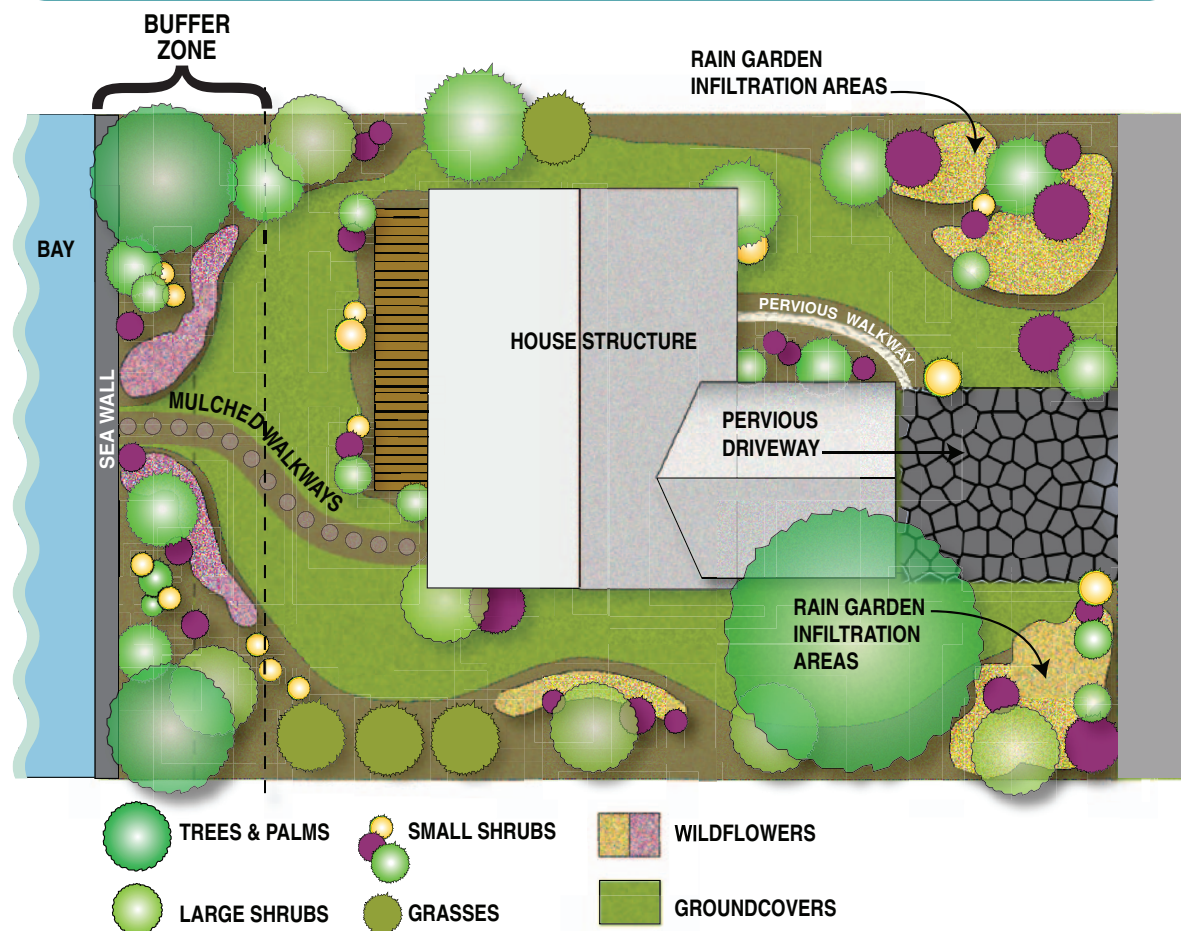


# Earth Shaping to Prevent Runoff



# Example of a Bay-Friendly Landscape



# Shoreline Landscaping Alternatives

## Sarasota County Fertilizer and Landscape Management Code, Ordinance 2007-062

Living on the water's edge is a beautiful and special place to live. This brochure provides a landscaping example with a sampling of plants that could be used in the required (10 feet ) fertilizer free zone and (6 feet or greater) recommended low maintenance (no irrigation or fertilizer after establishment) vegetated buffer zone along the bayfront. These plants may be used as an alternative to or in combination with an existing turf grass buffer. The plants were selected as an example to provide an attractive, salt-tolerant, bay-friendly, commercially available way to beautify the landscape while controlling erosion and reducing the amount of nutrients, fertilizer and pesticides entering our bays.

Remember to protect and encourage the establishment of mangroves seaward of your seawall.

For more information on additional shoreline plants or where to obtain them, contact

## Sarasota Bay Estuary Program

[www.sarasotabay.org](http://www.sarasotabay.org) 941.955.8085

## Florida Native Plant Society

[www.fnps.org](http://www.fnps.org) 321.271.6702

## FloridaYards & Neighborhoods

[www.FloridaYards.org](http://www.FloridaYards.org) 941.861.5000

## Association of Native Plant Nurseries

[www.afnn.org](http://www.afnn.org) 877.352.2366

## Sarasota County

[www.scgov.net](http://www.scgov.net) 941.861.5000

## UF/IFAS Sarasota County Extension Service

<http://sarasota.extension.ufl.edu> 941.861.5000

## Southwest Florida Water Management District

[www.WaterMatters.org](http://www.WaterMatters.org) 352.796.7211



## SARASOTA BAY ESTUARY PROGRAM

111 S. Orange Ave., Sarasota, FL 34236  
[www.sarasotabay.org](http://www.sarasotabay.org) · 941.955.8085

Sponsored in part by the  
Manasota Basin Board of the

Southwest Florida  
Water Management District

WATERMATTERS.ORG · 1-800-423-1476

**Sarasota County**  
[scgov.net](http://scgov.net) | 941.861.5000 | TV19

# LIVING on the WATER'S EDGE

## A Homeowner's Guide to Low Maintenance Landscaping Along Seawalls, Bayfronts and Canals





# PLANT CATEGORIES — Low Maintenance Plants for Landscaping Along Your Seawall

## TREES & PALMS



**Cabbage palm**  
*Sabal palmetto*

40' ht.  
  
H



**Florida thatch palm**  
*Thrinax radiata*

20' ht.  
  
H



**Gumbo limbo**  
*Bursera simaruba*

30' - 60' ht.  
  
H



**Seagrape**  
*Coccoloba uvifera*

35' ht.  
  
H



**Southern red cedar**  
*Juniperus virginiana*

30' ht.  
  
H

## LARGE SHRUBS



**Coco plum**  
*Chrysobalanus icaco*

15' ht.  
  
H



**Florida privet**  
*Forestiera segregata*

10' ht.  
  
H



**Firebush**  
*Hamelia patens*

5' - 15' ht.  
  
L



**Silver buttonwood**  
*Conocarpus erecta*  
var. *sericea*

20' ht.  
  
H



**Simpson stopper**  
*Myrcianthes fragrans*

6' - 20' ht.  
  
H

## SMALL SHRUBS



**Beautyberry**  
*Callicarpa americana*

4' - 6' ht. x 4' - 6' w.  
  
L



**Coontie**  
*Zamia floridana*

2' - 4' ht. x 3' - 4' w.  
  
H



**Necklace pod**  
*Sophora tomentosa*  
var. *truncata*

6' ht. x 6' w.  
  
H



**Saw palmetto**  
*Serenoa repens*

6' - 10' ht. x 6' - 10' w.  
  
H



**Wild coffee**  
*Psychotria nervosa*

4' - 10' ht. x 4' - 6' w.  
  
L

## WILDFLOWERS



**Beach sunflower**  
*Helianthus debilis*  
ssp. *vestitus*

1' ht. x 3' - 4' w.  
  
H



**Blanket flower**  
*Gaillardia pulchella*

1' ht. x 2' - 3' w.  
  
M



**Seaside goldenrod**  
*Solidago sempervirens*

3' - 4' ht. x 1' w.  
  
M-H



**Sea oxeye daisy**  
*Borrchia frutescens*

2' - 3' ht. x 2' - 3' w.  
  
H



**Tropical sage**  
*Salvia coccinea*

1' - 2' ht.  
  
L

## GROUNDCOVERS



**Tampa verbena**  
*Glandularia tampensis*

6" - 8" ht. x 24" w.  
  
M



**Golden creeper**  
*Ernodea littoralis*

1' - 3' ht. x 4' - 6' w.  
  
H



**Perennial peanut**  
*Arachis glabrata*  
Not Native - Turf replacement

6" ht.  
  
L-M



**Sea purslane**  
*Sesuvium*  
*portulacastrum*

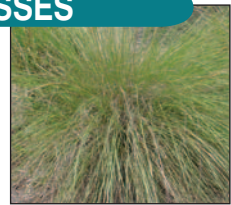
6" - 12" ht.  
  
H



**Sunshine mimosa**  
*Mimosa strigillosa*  
Turf Replacement

6" - 9" ht. x 10' w.  
  
L-M

## GRASSES



**Cordgrass**  
*Spartina bakeri*

2' - 5' ht. x 2' - 6' w.  
  
H



**Elliot's lovegrass**  
*Eragrostis ellioti*

1' - 2' ht. x 1' - 2' w.  
  
L



**Dwarf Fakahatchee**  
*Tripsacum floridanum*

4' - 6' ht. x 4' - 6' w.  
  
L-M



**Muhly grass**  
*Muhlenbergia capillaris*

1' - 4' ht. x 1' - 4' w.  
  
M



**Beach panicum**  
*Panicum amarum*

1' - 5' ht. x 1' - 5' w.  
  
H

## VINES



**Coral honeysuckle**  
*Lonicera sempervirens*

L-M



**Maypop passion vine**  
*Passiflora incarnata*

M



**Railroad vine**  
*Ipomoea pes-caprae*

H



**Skyblue clustervine**  
*Jacquemontia*  
*pentanthos*

M



**Wild allamanda**  
*Pentalinon luteum*  
Do not confuse with  
Yellow mandevilla

H

## KEY TO SYMBOLS:

### SOIL MOISTURE:

Dry (well drained) Moist Wet

### SUN LIGHT:

Full Partial Shade

### SALT SPRAY TOLERANCE:

L = Low M = Medium H = High

ATTRACTS BIRDS:

ATTRACTS BUTTERFLIES: